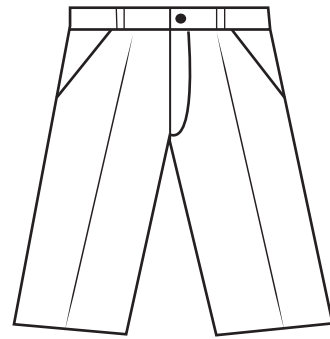




## BG6002S Ladies' Scotchgard™ Twill Flat Front Short

- 60/40 cotton/poly blend
- Easy care
- Stain resistant
- Wrinkle resistant
- Treated with Scotchgard™ fabric protector
- 7.25 ounces
- Angled front side pockets
- Expandable elasticized side waistband for custom fit
- Button waistband closure
- Sizes: 2-28
- 7 1/2" inseams



\*Discontinued/Closeout color. Please call or login to [BlueGeneration.com](http://BlueGeneration.com) for more info.

These ladies 7.25 oz. flat front twill shorts are a wow-worthy wearable that are sure to stand out. This comfortable product is made from a 60% cotton/40% polyester blend and is treated with Scotchgard™ fabric protector for stain resistance. It features an expandable elasticized side waistband for a custom fit, as well as angled front side pockets (and no back pockets) with a button waistband closure and brass zipper. Available in sizes from 2 to 28. 7 1/2" inseam.

### LADIES' SIZES

WAIST	25	26	27	28	29	30.5	32	33.5	35	36.5	38	39.5	41	42.5
SIZE	2	4	6	8	10	12	14	16	18	20	22	24	26	28
HIP	36	37	38	39	40	41.5	43	44.5	46.5	48.5	50.5	52.5	54	56

Pant inseams available in 28", 30", 32" and 34" (open).  
Short inseams available in 7.5".