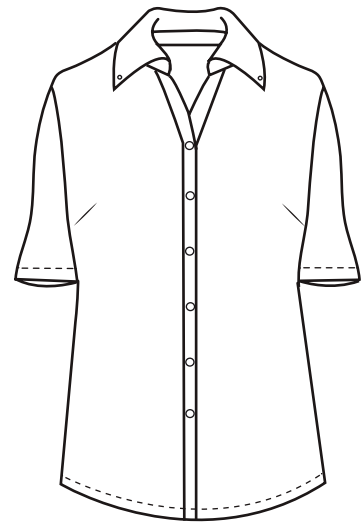


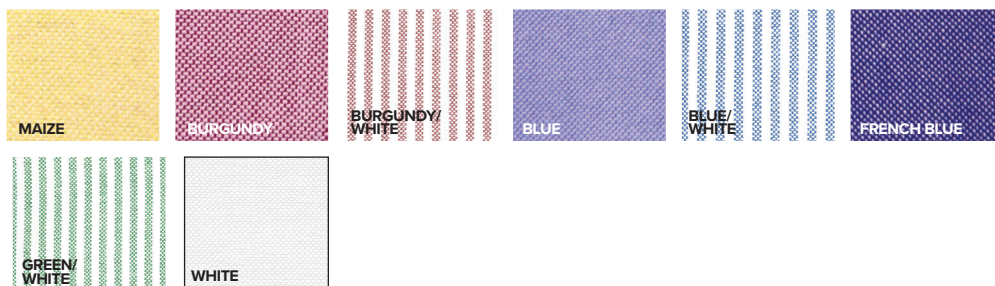


BG6214S Ladies' S/S Oxford Shirt

- 60/40 Cotton/poly blend
- Easy care
- Stain release
- Wrinkle resistant
- 6 ounce
- Button down collar
- Pearl white buttons
- No pocket
- Sizes: S-4XL
- Classic fit



If you're in the market for a wardrobe staple that will make a statement, look no further than this ladies' pocketless short-sleeve oxford dress shirt. This easy-care product is made from a 60% cotton/40% polyester blend and features a button-down collar, a center-pleated back, adjustable cuffs and pearl white buttons. Featuring wrinkle-resistant technology, this classic-fit item comes in a variety of sizes (S-4XL), colors and stripes! Make the fashion-forward choice today!



LADIES' SIZES

	XS (2)	S (4-6)	M (8-10)	L (12-14)	XL (16-18)	2XL (20-22)	3XL (24-26)	4XL (28-30)	5XL (32-34)
BUST	30-31	32-33	34-35	36-38	40-42	44-46	48-50	52-54	56-58
BOTTOM	31-32	33-34	35-36	37-39	41-43	45-47	49-51	53-55	—