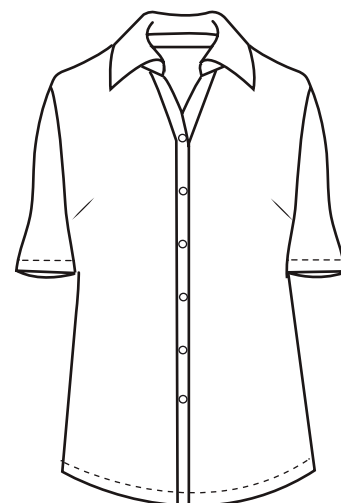




## BG6216S Ladies' S/S Superblend Poplin Shirt with Bone Buttons

- 65/35 Poly/cotton blend
- Easy care
- Stain release
- Wrinkle resistant
- Lightweight 5.5 ozs.
- 2 side back pleats
- Double back yoke
- Spread collar
- Bone buttons
- No pocket
- Hemmed sleeves
- Sizes: XS-4XL
- Classic fit



Perfect for work uniforms, casualwear and much more, this ladies short-sleeve 5.5 oz. shirt is bound to be a bold new addition to your wardrobe. This eye-catching button-down shirt is made from a 65% polyester/35% cotton blend and has stain-release, wrinkle-resistant and crease resistant technology. It features a double-back yoke, two side back pleats, a straight hemmed bottom, bone-horn buttons, adjustable cuffs and a spread collar, and it is available in several colors and in sizes from XS to 4XL.



### LADIES' SIZES

	XS (2)	S (4-6)	M (8-10)	L (12-14)	XL (16-18)	2XL (20-22)	3XL (24-26)	4XL (28-30)	5XL (32-34)
BUST	30-31	32-33	34-35	36-38	40-42	44-46	48-50	52-54	56-58
BOTTOM	31-32	33-34	35-36	37-39	41-43	45-47	49-51	53-55	—