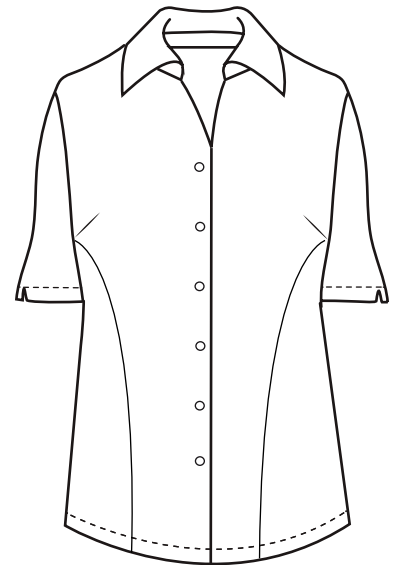


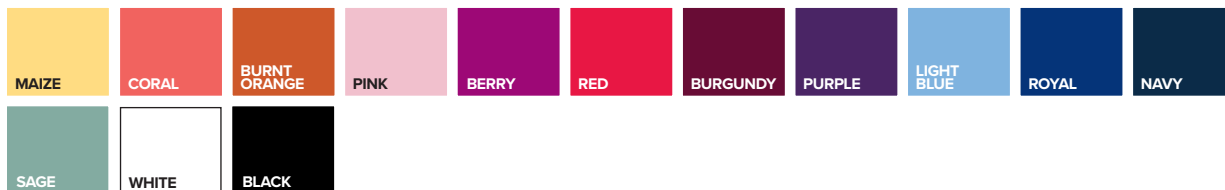


## BG6218S Ladies' S/S Stretch Poplin Shirt

- 58% cotton/39% polyester/3% spandex blend
- Stain release
- Wrinkle resistant
- 4.5 ounce
- Spread collar
- Soft touch finish
- Double back yoke
- V-notch cuffs
- Matching pearlized buttons
- Curved side panels for feminine look
- Sizes: XS-4XL
- Feminine fit



For a bold blouse that will spice up your wardrobe, look no further! Made of a 58% cotton/39% polyester/3% spandex blend, this ladies 4.5 oz. short-sleeve poplin blouse is a bound to turn plenty of heads. It features turn-up cuffs, wrinkle-resistant technology, a spread collar, curved side panels for a slimmer fitted feminine look, a soft-touch finish, a double-back yoke and pearlized buttons. Available in several colors and in sizes from XS-4XL, this stylish shirt won't go unnoticed!



### LADIES' SIZES

	XS (2)	S (4-6)	M (8-10)	L (12-14)	XL (16-18)	2XL (20-22)	3XL (24-26)	4XL (28-30)	5XL (32-34)
BUST	30-31	32-33	34-35	36-38	40-42	44-46	48-50	52-54	56-58
BOTTOM	31-32	33-34	35-36	37-39	41-43	45-47	49-51	53-55	—