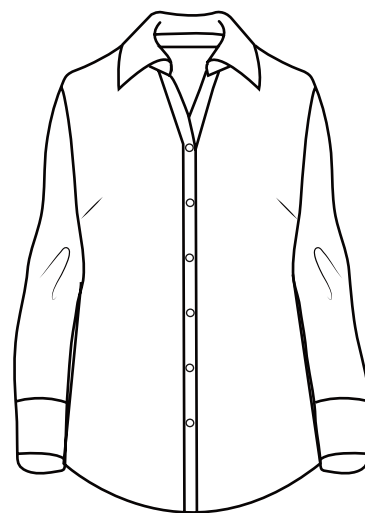




BG6261 Ladies' 3/4 Sleeve Poplin Swing Shirt

- 65/35 Poly/cotton poplin blend
- Easy care
- Stain release
- Lightweight 5.5 oz.
- Wrinkle resistant
- Matching buttons
- 3/4 sleeve
- Spread collar
- Flared bottom for roomier fit
- Also ideal for maternity
- Full sized fit
- Sizes: S-4XL



A stylish shirt with a looser fit for extra comfort, this ladies 5.5 ounce 3/4 sleeve poplin swing shirt is a wow-worthy addition to your wardrobe! Made from a 65% polyester/35% cotton blend with stain release, this eye-catching item is wrinkle/crease resistant and has a spread collar, hemmed sleeves, a double-back yoke, two back side pleats, no pockets and adjustable cuffs. Also perfect for maternity, this item is available in several colors and in sizes from S to 4XL to optimize a perfect fit!



LADIES' SIZES

	XS (2)	S (4-6)	M (8-10)	L (12-14)	XL (16-18)	2XL (20-22)	3XL (24-26)	4XL (28-30)	5XL (32-34)
BUST	30-31	32-33	34-35	36-38	40-42	44-46	48-50	52-54	56-58
SLEEVE	31	31.5	32	32.5	33	33.5	34	34.5	—
BOTTOM	31-32	33-34	35-36	37-39	41-43	45-47	49-51	53-55	—
SWING BOTTOM (6261 ONLY)	36-37	38-39	40-41	42-44	46-48	50-52	54-56	58-60	—