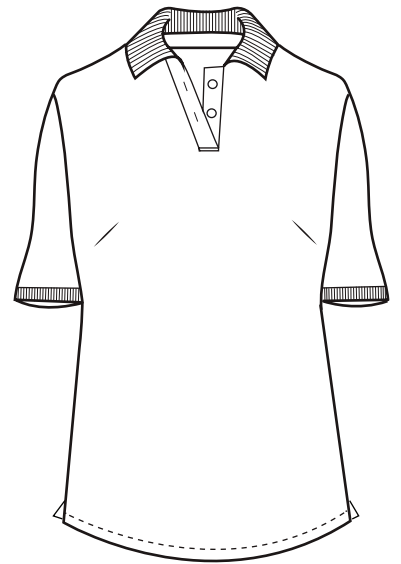




BG6500 Ladies' Soft Touch S/S Pique Polo

- 65/35 poly/cotton pique
- Easy care
- 5.5 ounce pique
- Wrinkle resistant
- Rib knit collar & cuffs
- Curl free collar
- Matching buttons
- Side vents
- Taped neck & shoulders
- Tag free label
- 2 button placket
- Sizes: S-4XL
- Classic fit



No wardrobe is complete without this 5.5 oz. ladies short sleeve pique polo! Great for business or performance purposes, this trendy item is made from a 65/35 polyester/cotton blend that is wrinkle resistant. It features a rib-knit collar, banded sleeves, a straight bottom, side vents, taped neck and shoulder and a two-button placket with matching buttons. This breathable product is available in an array of colors and in sizes ranging from S to 4XL. Size XS is available in RED, LIGHT BLUE, TURQUOISE, ROYAL, NAVY, WHITE, GRAPHITE and BLACK.



XS: BG6500 ladies' XS available in these colors only.

LADIES' SIZES

| | XS (2) | S (4-6) | M (8-10) | L (12-14) | XL (16-18) | 2XL (20-22) | 3XL (24-26) | 4XL (28-30) | 5XL (32-34) |
|--------|--------|---------|----------|-----------|------------|-------------|-------------|-------------|-------------|
| BUST | 30-31 | 32-33 | 34-35 | 36-38 | 40-42 | 44-46 | 48-50 | 52-54 | 56-58 |
| BOTTOM | 31-32 | 33-34 | 35-36 | 37-39 | 41-43 | 45-47 | 49-51 | 53-55 | — |