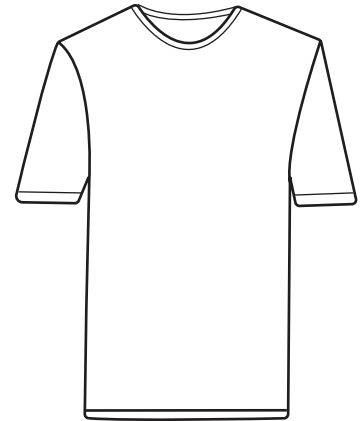




## BG4702 Ladies' S/S Jewel Neck Tee

- 95% Soft combed ringspun cotton/5% spandex
- Superfine 6.5 ounce jersey 1 X 1 rib knit
- Hemmed sleeves & bottom
- Sizes: XS-4XL
- Classic fit
- Jewel neck



Let us help you pull off a great look with this ladies short sleeve jewel neck tee. Made from a 95% combed ring-spun cotton/5% spandex blend, this classic fit shirt will make an excellent addition to any wardrobe. It is constructed from superfine 6.5 oz., 1 x 1 rib knit material and features hemmed cuffs and bottom. It is available in sizes ranging from XS to 4XL and in several colors. This fashion-forward choice is sure to make a lasting impression!



### LADIES' SIZES

|        | XS (2) | S (4-6) | M (8-10) | L (12-14) | XL (16-18) | 2XL (20-22) | 3XL (24-26) | 4XL (28-30) | 5XL (32-34) |
|--------|--------|---------|----------|-----------|------------|-------------|-------------|-------------|-------------|
| BUST   | 30-31  | 32-33   | 34-35    | 36-38     | 40-42      | 44-46       | 48-50       | 52-54       | 56-58       |
| BOTTOM | 31-32  | 33-34   | 35-36    | 37-39     | 41-43      | 45-47       | 49-51       | 53-55       | —           |