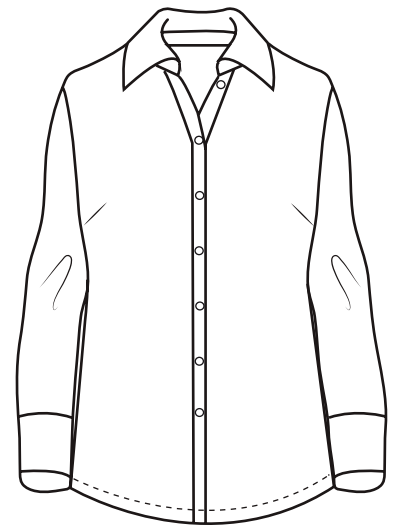




## BG6216 Ladies' L/S Superblend Poplin Shirt with Bone Buttons

- 65/35 Poly/cotton blend
- Easy care
- Stain release
- Wrinkle resistant
- Lightweight 5.5 ozs.
- 2 side back pleats
- Double back yoke
- Spread collar
- Bone buttons
- No pocket
- Sizes: XS-4XL
- Classic fit



Lightweight in warmth but heavy in style, this ladies 5.5 oz. long-sleeve shirt will make a great impression regardless of the occasion! Made of a 65% polyester/35% cotton blend, this eye-catching dress shirt has stain-release technology and is both wrinkle and crease resistant. It features a double-back yoke, two side back pleats, a straight hemmed bottom, bone-horn buttons, adjustable cuffs and a spread collar. Available in several colors and in sizes from XS to 4XL, this fashionable item is perfect fit for any wardrobe.



### LADIES' SIZES

	XS (2)	S (4-6)	M (8-10)	L (12-14)	XL (16-18)	2XL (20-22)	3XL (24-26)	4XL (28-30)	5XL (32-34)
BUST	30-31	32-33	34-35	36-38	40-42	44-46	48-50	52-54	56-58
SLEEVE	31	31.5	32	32.5	33	33.5	34	34.5	—
BOTTOM	31-32	33-34	35-36	37-39	41-43	45-47	49-51	53-55	—