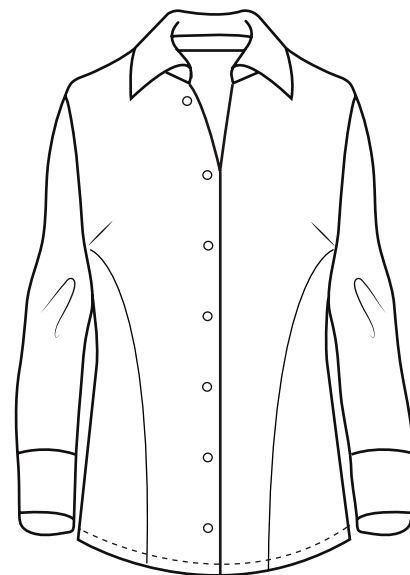


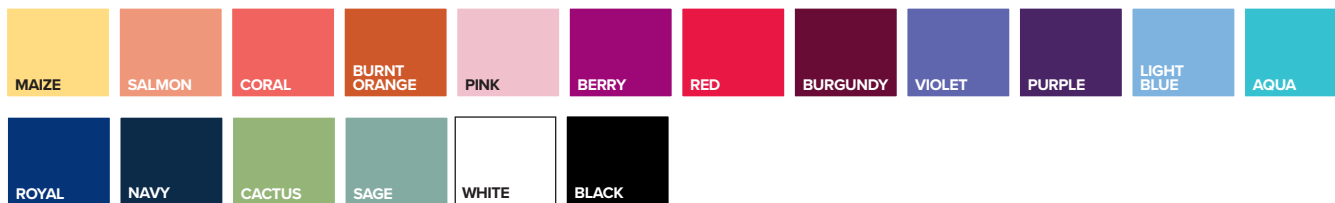


BG6218 Ladies' 3/4 Sleeve Stretch Poplin Shirt

- 58% cotton/39% polyester/3% spandex blend
- 4.5 ounce
- 3/4 sleeves
- No pocket
- Stain release
- Wrinkle resistant
- Curved side panels for feminine look
- Spread collar
- Soft touch finish
- Matching pearlized buttons
- Double back yoke
- Sizes XS-4XL
- Feminine fit



This wow-worthy wearable is no stretch! Made of a 58% cotton/39% polyester/3% spandex blend, this ladies stretch 3/4 sleeve poplin blouse is a versatile and eye-catching addition to any wardrobe. It features turn-up cuffs, wrinkle-resistant technology, a spread collar, curved side panels for a slimmer fitted feminine look, a soft-touch finish, a double-back yoke and pearlized buttons. Available in several colors and in sizes from XS to 4XL, this stylish shirt will turn heads!



LADIES' SIZES

	XS (2)	S (4-6)	M (8-10)	L (12-14)	XL (16-18)	2XL (20-22)	3XL (24-26)	4XL (28-30)	5XL (32-34)
BUST	30-31	32-33	34-35	36-38	40-42	44-46	48-50	52-54	56-58
SLEEVE	31	31.5	32	32.5	33	33.5	34	34.5	—
BOTTOM	31-32	33-34	35-36	37-39	41-43	45-47	49-51	53-55	—