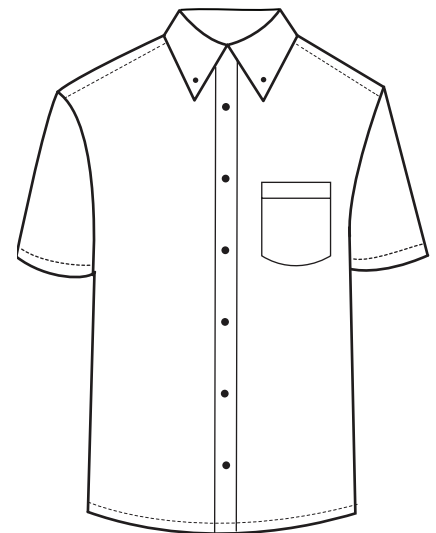


BG7266S Men's S/S Superblend Poplin Shirt



- 65/35 poly/cotton poplin blend
- Easy care
- Stain release
- Wrinkle resistant
- Lightweight 5.5 ozs.
- 2 side back pleats
- Double back yoke
- Button down collar
- Patch pocket
- Matching buttons
- Hemmed sleeves
- Sizes: S-6XL
- Classic fit



Don't underestimate the impact on your wardrobe! This men's short-sleeve easy-care poplin shirt is designed to leave a lasting impression. Crafted from a high-quality blend of 65% polyester and 35% cotton, this lightweight 5.5 oz. shirt offers exceptional wrinkle and crease resistance. It's equipped with advanced stain-release and color-lock technology, ensuring it maintains its pristine appearance. The shirt boasts a range of thoughtful features, including matching buttons, hemmed sleeves, a double-back yoke, a button-down collar, two side back pleats, and a convenient patch pocket. It's available unimprinted, and you can choose from a variety of colors and sizes to suit your needs.



MEN'S/ADULT SIZES

	XXS	XS	S	M	L	XL	2XL	3XL	4XL	5XL	6XL	7XL	8XL	9XL-10XL
NECK	13.5	14	14-14.5	15-15.5	16-16.5	17-17.5	18-18.5	19-19.5	19.5-20	20-20.5	20.5-21	21	21.5	22.5
CHEST	28-29	30-32	34-36	38-40	42-44	46-48	50-52	54-56	58-60	62-64	66-67	68-69	70-71	74-75