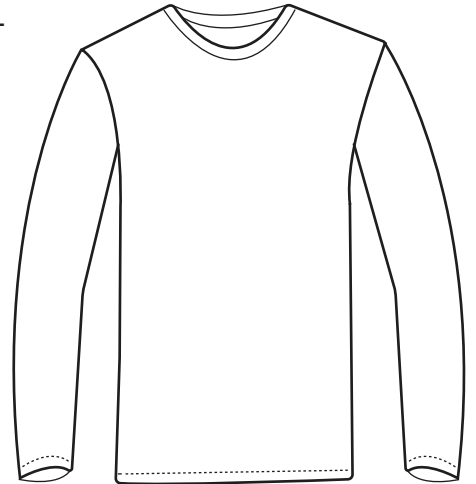




## BG7303 Adult Value Wicking L/S Tee

- Moisture wicking antimicrobial
- BLU-X-DRI protection
- 100% polyester
- Stain release
- Wrinkle resistant
- Snag resistant
- 3.8 ounce jersey
- Taped neck
- Side seams
- Tag free label
- Sizes: XXS-6XL
- Classic fit



A perfect piece of performance apparel for runners, gym-goers and more, this 3.8 oz. adult long-sleeve crew neck tee is a stylish way to keep active! Made of 100% polyester, this comfortable shirt features moisture-wicking BLU-X-DRI protection designed to keep you cool and dry. It has stain release, is snag/wrinkle resistant and antimicrobial. It features a hemmed bottom and cuffs, a taped neck, a straight bottom and a tag-free label. This classic-fit item comes in several colors and in sizes from XXS to 6XL.



\*Optic Yellow and Safety Orange are ANSI 107 compliant for fluorescent background color.  
 \*\*White fabric slightly heavier.

### MEN'S/ADULT SIZES

	XXS	XS	S	M	L	XL	2XL	3XL	4XL	5XL	6XL	7XL	8XL	9XL-10XL
NECK	13.5	14	14-14.5	15-15.5	16-16.5	17-17.5	18-18.5	19-19.5	19.5-20	20-20.5	20.5-21	21	21.5	22.5
CHEST	28-29	30-32	34-36	38-40	42-44	46-48	50-52	54-56	58-60	62-64	66-67	68-69	70-71	74-75
SLEEVE	30.5-31	31.5-32	32.5-33	33.5-34	34.5-35	35.5-36	36.5-37	37.5-38	37.5-38	37.5-38	37.5-38	37.5-38	37.5-38	37.5-38
SLEEVE (TALL)	—	—	—	—	36.5-37	37.5-38	38.5-39	39.5-40	—	—	—	—	—	—