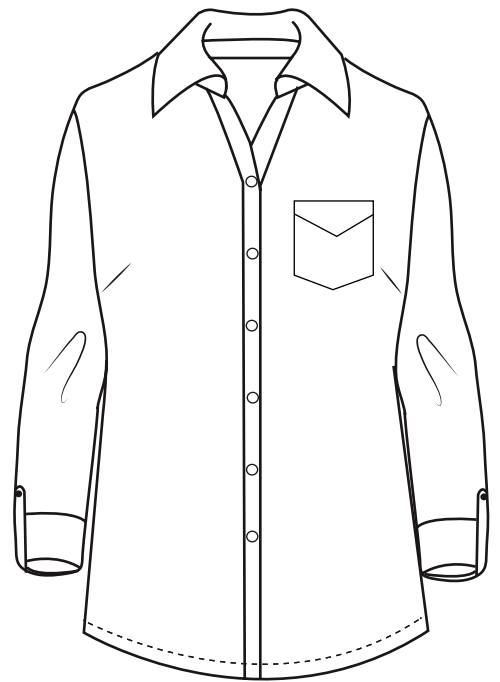




## BG8203 Ladies' Untucked Denim Shirt

- 100% Sandwashed denim
- 7 oz.
- Utility roll up sleeve
- Spread collar
- White pearlized buttons
- Slightly tapered fit
- Contoured hemline
- Sizes: S-4XL
- Untucked fit



Classic sandwashed denim updated in today's fashionable untucked silhouette, featuring a shorter more tapered fit in vintage blue. Designed to be worn in or out, this shirt offers a slightly tapered fit, shorter length and contoured hemline. Available up to size 4XL, this shirt also offers a spread collar with white pearlized buttons and adjustable cuffs.

### LADIES' SIZES

	XS (2)	S (4-6)	M (8-10)	L (12-14)	XL (16-18)	2XL (20-22)	3XL (24-26)	4XL (28-30)	5XL (32-34)
BUST	30-31	32-33	34-35	36-38	40-42	44-46	48-50	52-54	56-58
SLEEVE	31	31.5	32	32.5	33	33.5	34	34.5	—
BOTTOM	31-32	33-34	35-36	37-39	41-43	45-47	49-51	53-55	—