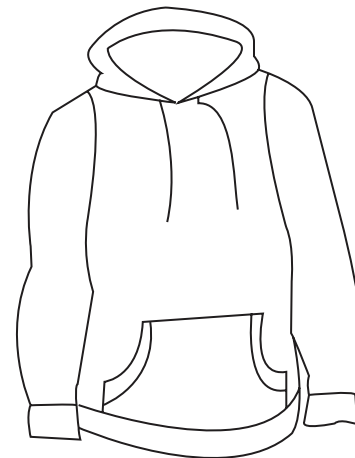


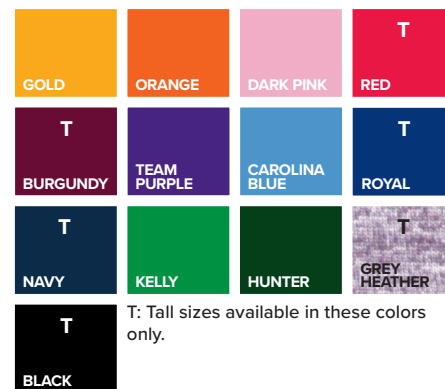


## BG9301P Adult Pullover Hoodie

- 70/30 combed ringspun cotton/poly blend
- Double fleece lined hood
- 9 ounces
- Front pouch with double needle stitching
- Striped ribbon neck tape
- Brass metal drawstring eyelets with heavy gauge drawstring
- 1 X 1 rib cuffs and waistband with Spandex
- Adult sizes XS-6XL



A popular piece of casualwear, this adult pullover hoodie is sure to make a lasting impression. Made of a 70% combed ring-spun cotton/30% polyester blend, this cozy 9 oz. sweatshirt has a double-lined fleece hood and a front pouch with double needle stitching. It also features striped ribbon neck tape, a half-moon label mount with sewn down label, brass metal drawstring eyelets, rib cuffs and a spandex waistband. This product is available in several colors and in sizes from XS to 6XL (Tall Sizes: LT-3XLT in select colors).



### MEN'S/ADULT SIZES

	XXS	XS	S	M	L	XL	2XL	3XL	4XL	5XL	6XL	7XL	8XL	9XL-10XL
NECK	13.5	14	14-14.5	15-15.5	16-16.5	17-17.5	18-18.5	19-19.5	19.5-20	20-20.5	20.5-21	21	21.5	22.5
CHEST	28-29	30-32	34-36	38-40	42-44	46-48	50-52	54-56	58-60	62-64	66-67	68-69	70-71	74-75
SLEEVE	30.5-31	31.5-32	32.5-33	33.5-34	34.5-35	35.5-36	36.5-37	37.5-38	37.5-38	37.5-38	37.5-38	37.5-38	37.5-38	37.5-38
SLEEVE (TALL)	-	-	-	-	36.5-37	37.5-38	38.5-39	39.5-40	-	-	-	-	-	-